

## Grundlagen

### ACO ShowerDrain shower channels

30 mm surrounding flange width (as per EN 1253-1)

Material: Stainless steel

Suitable connections to the flange as per LEITFADEN-AIV (guidelines for compound sealing methods) issued by Fachverband Fliesen und Naturstein im Zentralverband Deutsches Baugewerbe (ZDB), a tile and natural stone trade association that forms part of Germany's central construction industry organisation.

1. Sealing tapes
2. Sealing sleeves
3. Fabric mats/fabric sleeves

### Summary

Gullies and channels constitute penetrations of surface seals (AIV). To ensure they are permanently waterproofed, responsible planners must coordinate the various trades, between contractors, screed installers and tilers.

This includes a realistic estimation of the load class, careful choice of materials, and the execution of the construction work itself. Permanent functional reliability can only be assured through such coordination.

### Schedule of applicable standards/regulations

- EN 1253 – Gullies for buildings (03/2015)
- DIN 1986-100 – Building and land drainage systems
- EN 12056 – Gravity drainage systems inside buildings
- EN 14891 – Liquid-applied water impermeable products for use beneath ceramic tiling-bonded with adhesives
- DIN 18195 – Building seals
- DIBt PG AIV (Test principles for compound seals)
- Building Rules List A, Part 2
- ETAG 022 T1 – Guideline for European technical approval of watertight covering kits for wet room floors and/or walls; Part 1: Liquid applied coverings with or without wearing surface (06/2006)
- LEITFADEN (ZDB fact sheet) – Guidelines for planning and designing gullies and channels using compound sealing methods (AIV 08/2012)

### ACO Passavant GmbH

Im Gewerbepark 11c  
36457 Stadtlengsfeld  
Tel. +49 (0) 36965 819-0  
Fax +49 (0) 36965 819-361  
www.aco-haustechnik.de

## ACO building drainage

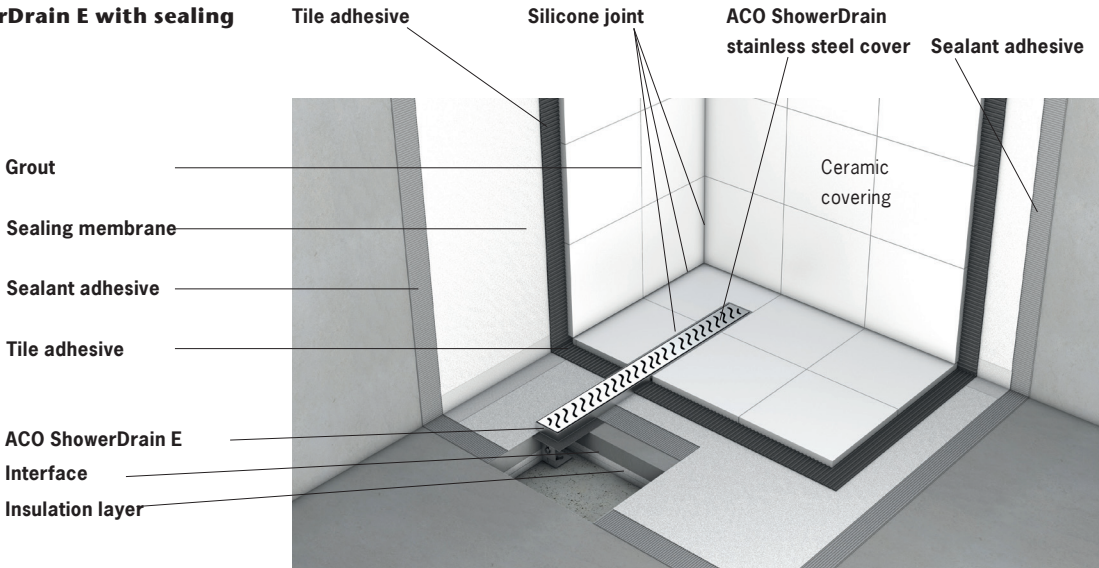


*ACO ShowerDrain: Function meets design*

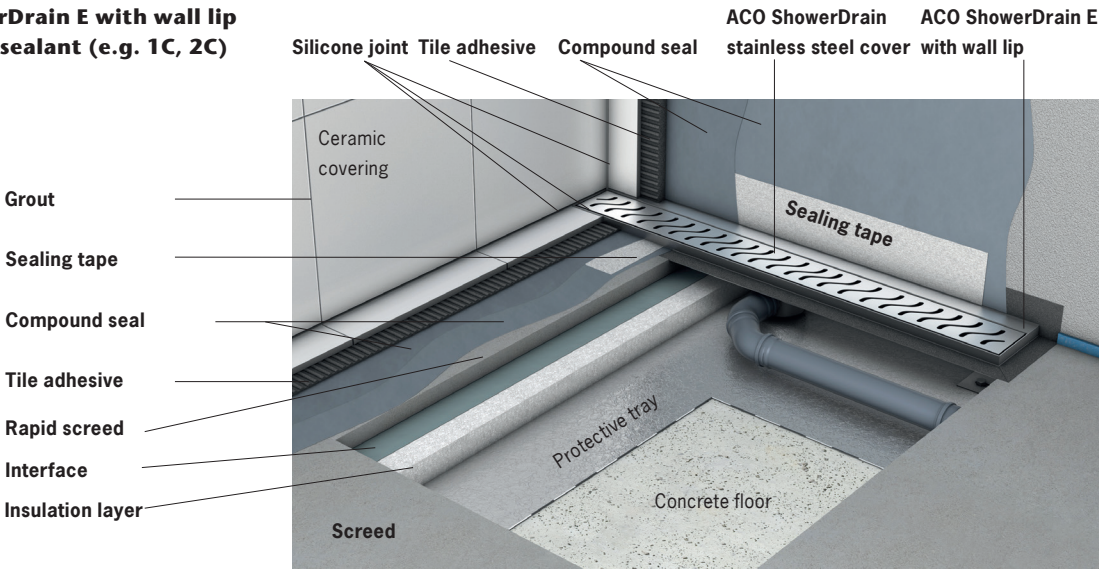
**Practical installation and reliable sealing performance**



**ACO ShowerDrain E with sealing membrane**



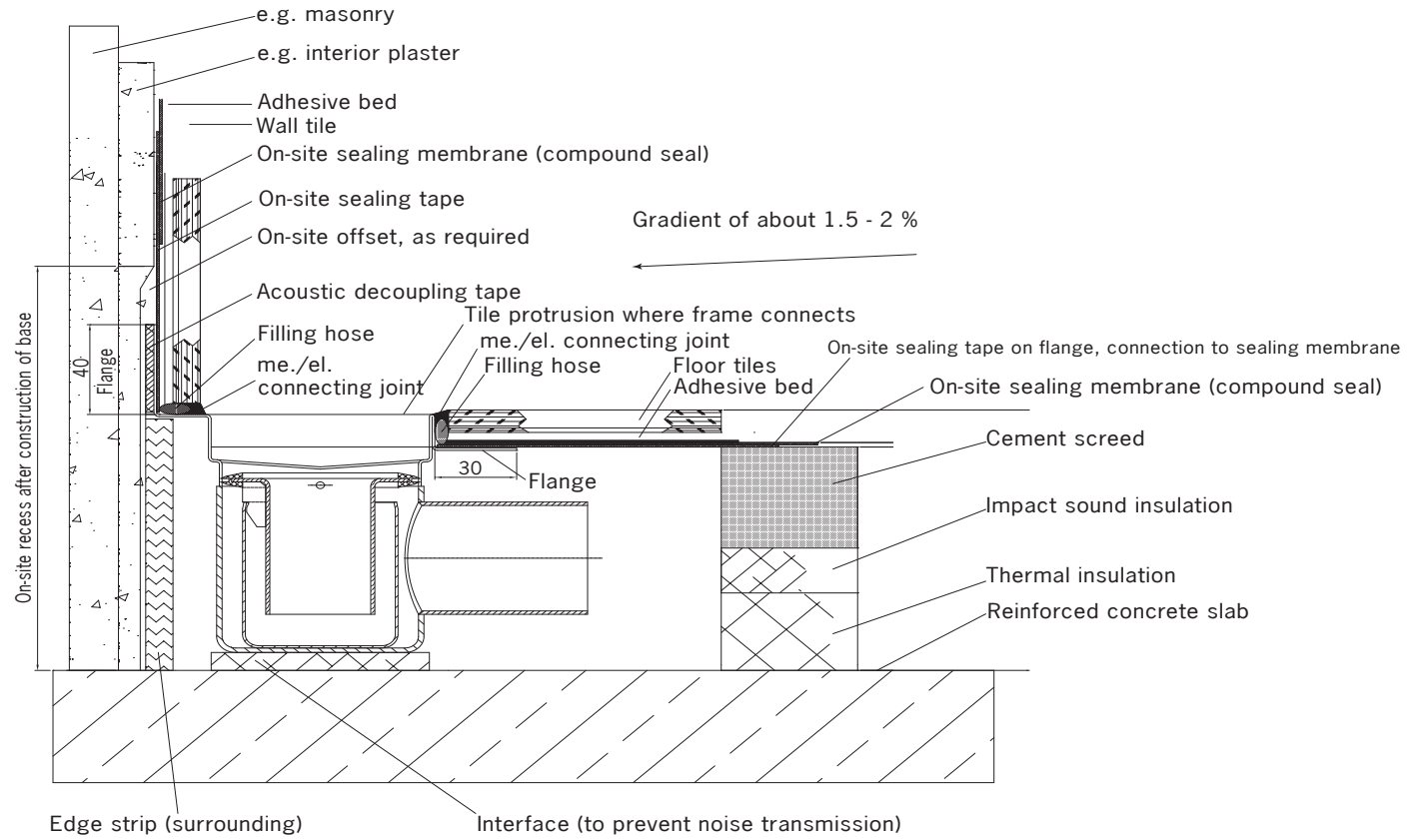
**ACO ShowerDrain E with wall lip with liquid sealant (e.g. 1C, 2C)**



**Installing shower channels in compound seals (AIV)**

- The base (bare concrete) must be clean and dry before commencing installation
- Apply suitable protection for bare concrete (e.g. bitumen membrane tray)
- Install the shower channel as per the instruction manual
- Connect to the drainage system
- Install the edge strip (floating screed, sound protection)
- Install the insulation layers (e.g. thermal and impact sound insulation)
- Lay the interface on top of the insulation
- Pour plenty of screed around and under the shower channel, make sure there are no cavities
- Fill the recess with screed, level and compact it to form a gradient of about 1.5 - 2.0 % (bearing in mind 2 cm build-up at grating)
- This base must be suitable for application of compound sealant
- Create the compound seal (e.g. liquid, sealing membrane)
- Floor and wall surfaces in wet and spray areas must be thoroughly sealed
- Apply sealant adhesive as per manufacturer's instructions
- Apply sealing tapes, moulded parts, sealing membrane, sleeves, etc., as per manufacturer's instructions
- Apply tile adhesive
- Lay the tiles
- Grout the wall and floor surfaces
- Create the expansion joint
- Refer to the detailed cross section of the system
- If creating silicone joints, pay particular attention to 2 flank adhesion (3 flank adhesion must be avoided!)

**Cross section of the system**



**Rapid screed**

- Quickly ready for laying tiles, natural stone and artificial stone slabs

**1C flexible waterproof coatings**

- For seals beneath tiles and slabs

**Sealing membrane**

- For seals beneath tiles and slabs
- Even layer thicknesses
- Fast progression to the next step

**2C sealant adhesive**

- For laying the sealing membrane
- Can be walked on after about 2 hours

**2C sealant**

- For seals beneath tiles and slabs
- Covers cracks

**Sealing tapes, moulded parts, sleeves**

- Water-impermeable and weatherproof
- Highly tear resistant and elastic

**Tile adhesive**

- For positioning and laying ceramic surfaces, artificial and natural stone slabs
- Flexible, waterproof, frost-resistant

**Grout**

- For indoors, outdoors, walls and floors
- Gaps from 1 to 10 mm
- For grouting tiles made from porcelain stoneware, stoneware and stone
- Flexible, water and dirt repellent, good flank adhesion

**Silicone joint**

- Neutrally crosslinking silicones are suitable for all floor coverings and gullies/channels
- Evidence must be provided of the suitability of the joint sealant for natural stone surfaces