

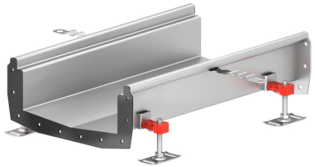
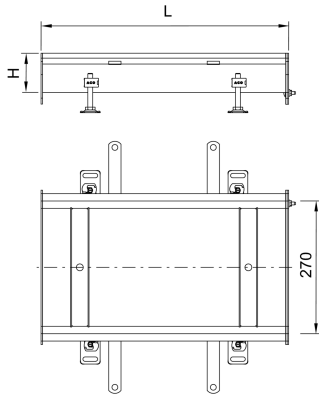
# Level invert channel

## Product information for the product group

### ACO Product benefits

- V-profile bottom design
- Enhanced flow efficiency at low flow rates
- Improved self-cleaning performance
- Adjustable EasyFix levelling feet

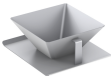
- BIM models are available in ACO Building Drainage BIM Revit libraries
- Certified according to EN 1253-1 and EN 1433
  - Steel thickness min. 1,5 mm
  - Fully welded hygienic joints
  - Fully pickled and passivated
  - Edge infill
- Available in 1.4301 (304) or 1.4404 (316L) grades of stainless steel
- Wide range of gratings including slip resistant solution
- Silt basket and foul air trap (FAT) available as accessory
- Anchors for fixing in concrete


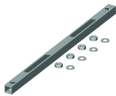


## Item Technical Data 448456

Dimensions		Material
L	H	
[mm]	[mm]	
500	50	1.4301

## Accessories

Description		Used with	Item number
ACO tundish portable		■ Universal	
 Base width x length (mm): 250 mm x 286 mm; Funnel width x length (mm): x; Funnel height (mm): 100 mm; Material (EN 1253): 1.4301			450648

	Description	Used with	Item number
	Base width x length (mm): 250 mm x 286 mm; Funnel width x length (mm): x; Funnel height (mm): 200 mm; Material (EN 1253): 1.4301		450649
	<b>EasyFix stabilizing set</b> The EasyFix stabilizer is recommended for firm installation of ACO channels during the fixation stage.		
		ACO hygienic and commercial box channels, width 300 mm; ACO vinyl box channels, width 270 mm; ACO modular box channel 270	446514

You can find further accessories under → <https://www.buildingdrainage.aco/search/?q=448456>

